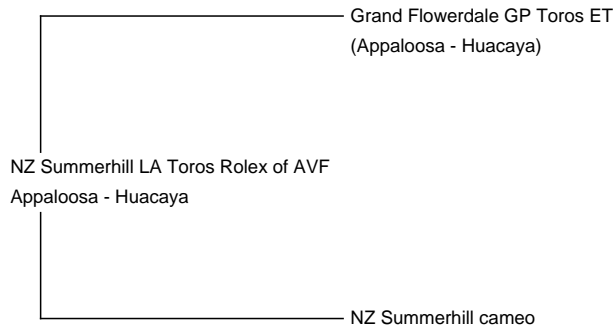




NZ Summerhill LA Toros Rolex of AVF
Service Fee (On Farm): Contact For Fee
Service Fee (Drive By): Contact For Fee
Service Fee (Mobile Mate): Contact For Fee
Sire: Grand Flowerdale GP Toros ET
Dam: NZ Summerhill cameo
Breed Type: Huacaya
Colour: Appaloosa
Registered With: BAS
Blood Lineage: NZ
Date of Birth: 20th January 2017



Diameter (Micron) of first fleece sample: 16.40µ

Fleece:

19.90µ SD 4.00µ CV 20.20% % Over 30 Microns(µ) 0.00% Staple Length 90 mm

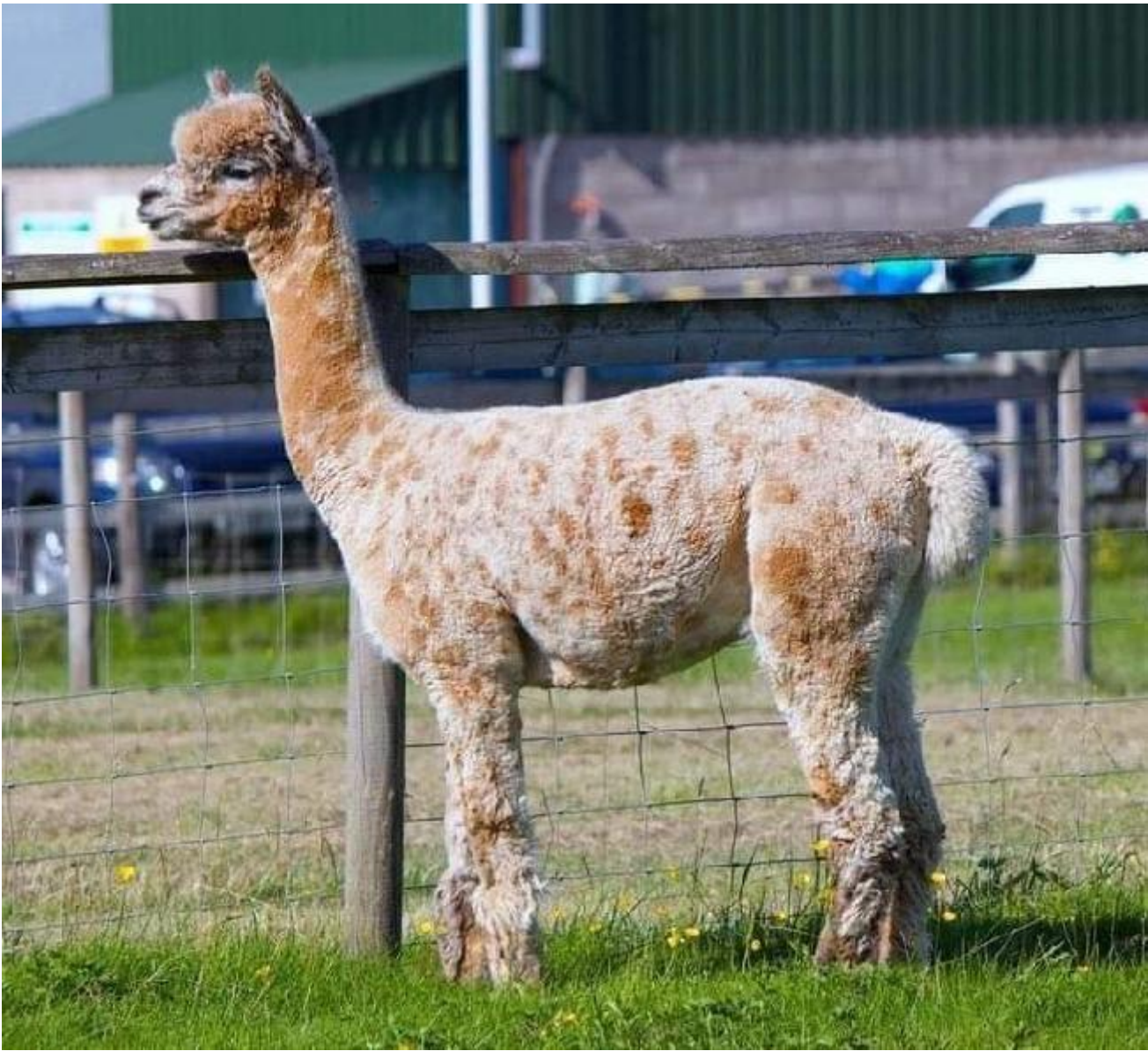
(taken on 10th June 2019 at 2 Years and 5 Months of age)

Description:

Rolex is an excellent example of a Leopard Appaloosa
 He was imported from New Zealand for his different bloodlines
 with his exceptional genetics he should have a positive impact on the future of Appaloosa alpacas in the UK
 Sire: Grand Flowerdale GP Toros ET, an exceptional, stunning Leopard appaloosa and his Sire: Camelot Tor, a
 supreme Champion 9 times at the Australian National and they carry, along with excellent fibre, superb conformation,
 beautiful head types and fantastic temperaments.
 Rolex has already shown that he can produce Appaloosa with his first Cria coming back at 14.4 microns, he should be
 an exciting prospect for anyone wanting to breed genetically diverse Appaloosas

Prizes Won:

Not shown



Fleece

