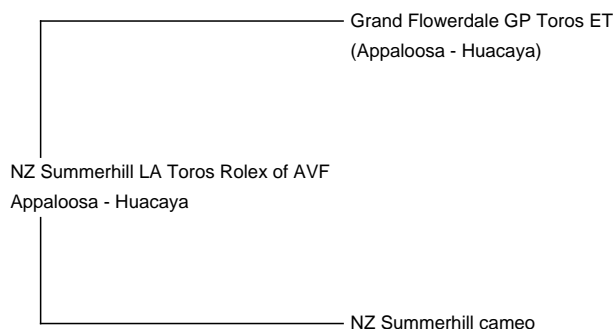




**NZ Summerhill LA Toros Rolex of AVF**  
**Service Fee (On Farm):** Contact For Fee  
**Service Fee (Drive By):** Contact For Fee  
**Service Fee (Mobile Mate):** Contact For Fee  
**Sire:** Grand Flowerdale GP Toros ET  
**Dam:** NZ Summerhill cameo  
**Breed Type:** Huacaya  
**Colour:** Appaloosa  
**Registered With:** BAS  
**Blood Lineage:** NZ  
**Date of Birth:** 20th January 2017



Diameter (Micron) of first fleece sample: 16.40μ

#### Fleece:

19.90μ SD 4.00μ CV 20.20% % Over 30 Microns(μ) 0.00% Staple Length 90 mm

*(taken on 10th June 2019 at 2 Years and 5 Months of age)*

#### Description:

Rolex is an excellent example of a Leopard Appaloosa

He was imported from New Zealand for his different bloodlines

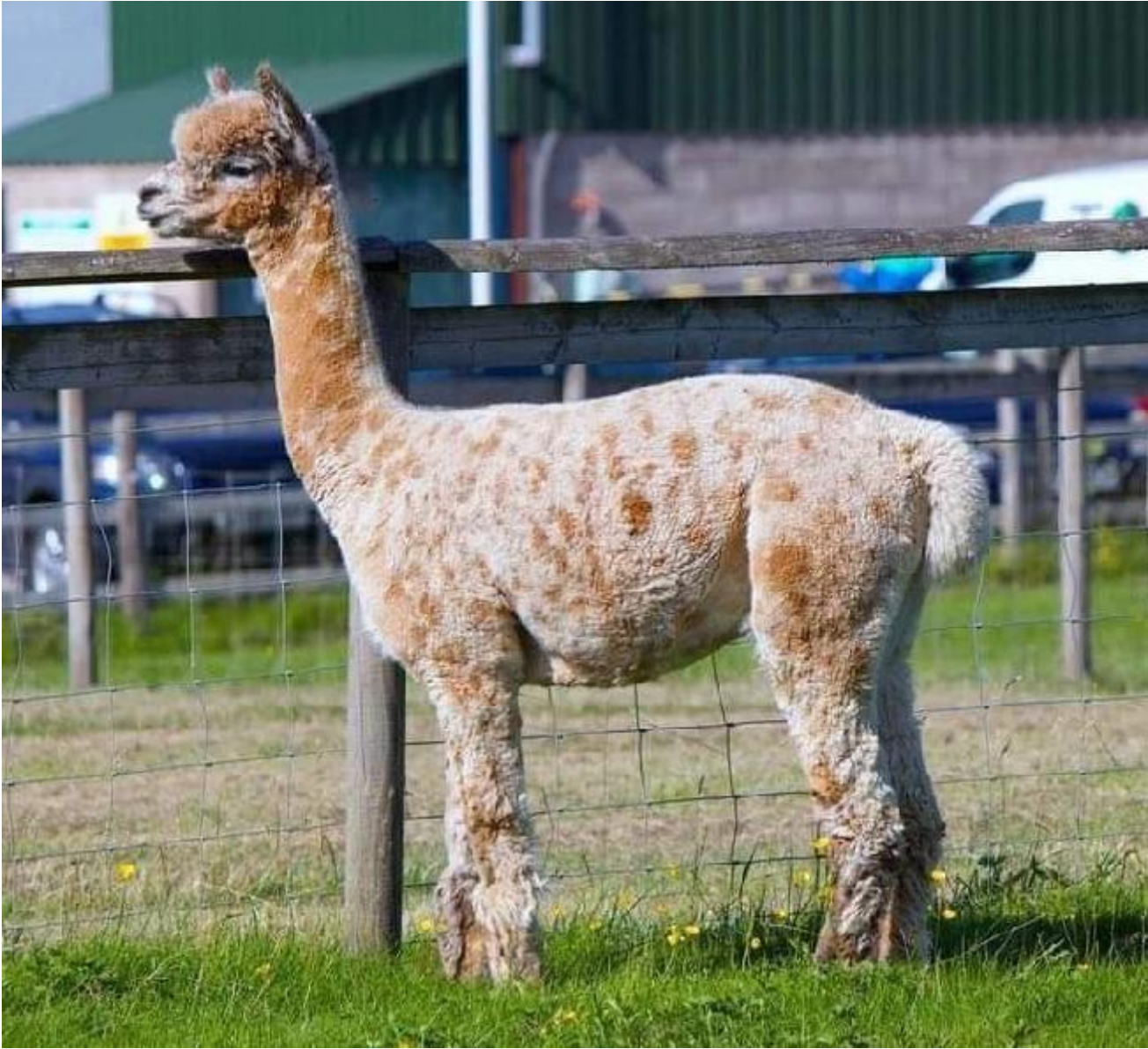
with his exceptional genetics he should have a positive impact on the future of Appaloosa alpacas in the UK

Sire: Grand Flowerdale GP Toros ET, an exceptional, stunning Leopard appaloosa and his Sire: Camelot Tor, a supreme Champion 9 times at the Australian National and they carry, along with excellent fibre, superb conformation, beautiful head types and fantastic temperaments.

Rolex has already shown that he can produce Appaloosa with his first Cria coming back at 14.4 microns, he should be an exciting prospect for anyone wanting to breed genetically diverse Appaloosas

#### Prizes Won:

Not shown



Fleece

